

Waseda Univ Online/Hybrid Education

早稲田大学におけるオンラインハイブリッド教育



Hironori Kasahara, Ph.D., IEEE Fellow, IPSJ Fellow
Senior Executive Vice President, Waseda University
IEEE Computer Society President 2018

URL: <http://www.kasahara.cs.waseda.ac.jp/>

笠原博徳:副総長(研究・情報化推進)



1980 BS, 82 MS, 85 Ph.D. , Dept. EE, Waseda Univ.

1985 Visiting Scholar: U. of California, Berkeley, 1986 Assistant Prof, 1988 Associate Prof, Waseda

1989-90 Research Scholar: U. of Illinois, Urbana-Champaign, Center for Supercomputing R&D,

1997 Prof., 2004 Director, Advanced Multicore Research Institute, Waseda

2017member: the Engineering Academy of Japan (2020 Board) , Science Council of Japan

2018 IEEE Computer Society President, Senior Vice President for Reseach & IT, Waseda Univ.

<Committees in Societies and Government: 263>

IEEE Computer Society: President 2018, Executive Committee(2017-2019), BoG(2009-14),

Strategic Planning Committee Chair 2018, Multicore STC Chair (2012-), Japan Chair(2005-07),

IPSJ Chair: HG for Magazine. & J. Edit, Sig. on ARC.

【METI/NEDO】 Project Leaders: Multicore for Consumer Electronics, Advanced Parallelizing Compiler, and Green Computing, Chair: Computer Strategy Committee

【Cabinet Office】 CSTP Supercomputer Strategic ICT PT, Japan Prize Selection Committees, etc.

【MEXT】 Info. Sci. & Tech. Committee, Supercomputers (Earth Simulator, HPCI Promo., Next Gen.

Supercomputer K) Committees, JST Moonshot Project G3 Robot & AI Vice Chair,

【COCN】 Board Member in Council of Competitiveness Nippon, etc.

<Research Accomplishment>

Reviewed Papers: 221, Invited Talks: 190,
Granted Patents: 54 (Japan, US, GB, China),
Articles in News Papers, Web News, TV etc.: 625

<AWARD>

1987 IFAC World Congress Young Author Prize

1997 IPSJ Sakai Special Research Award,

2005 STARC Academia-Industry Research Award,

2008 LSI of the Year Second Prize,

2008 Intel Asia Academic Forum Best Research Award,

2010 IEEE CS Golden Core Member Award

2014 Minister of Edu., Sci. & Tech. Research Prize

2015 IPSJ Fellow, 2017 IEEE Fellow, Eta Kappa Nu

2019 Sprit of IEEE Computer Society Award,

2020 IPSJ Contribution Award

Number of International Students

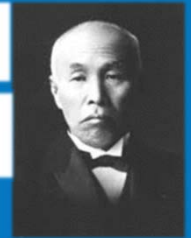
7,942* from **125** countries and territories
(Undergraduate and Graduate)

Alumni CEOs in Japan

10,606

8 Prime Ministers

Founder Shigenobu OKUMA



Graduate Employability

#1 in private university of Japan
(#2 in Japan, #27 in the world)
 QS Graduate Employability Rankings 2019

ALUMNI
[卒業生]
630,000

PARTNER INSTITUTIONS
[協定大学・機関]
848 (93 countries)

FACULTY <small>[教員]</small>	ENROLLMENT <small>[学生数]</small>	UNDERGRADUATE STUDENTS <small>[学部生]</small>	GRADUATE STUDENTS <small>[大学院生]</small>
5,468	49,436	41,051	8,385

NUMBER OF BOOKS
[図書館蔵書]
5,800,000

- SONY**
Masaru **IBUKA**
- Tadashi **YANAI**
- Hiroshi **YAMAUCHI**
- mercari**

- Prime Ministers**
- 8th Shigenobu Okuma
 - 17th Shigenobu Okuma
 - 55th Tanzan Ishibashi
 - 74th Noboru Takeshita
 - 76th Toshiki Kaifu
 - 84th Keizo Obuchi
 - 85th Yoshiro Mori
 - 91st Yasuo Fukuda
 - 95th Yoshihiko Noda

- Business Leaders**
Founders of global companies
- Sony
 - Samsung
 - Casio
 - LOTTE

- Business Leaders**
CEOs of global companies
- ANA
(All Nippon Airways)
 - HONDA
 - Nintendo
 - UNIQLO
 - Shiseido
 - Nomura Securities Co., Ltd.
 - Tokio Marine & Nichido Fire Insurance Co., Ltd.
 - Olympus Corporation

Aiji TANAKA
 President
 International Political Science Association (IPSA)
 President 2016

Hironori KASAHARA
 Senior Executive Vice President
 IEEE Computer Society President 2018. The first president from outside USA and Canada in 72 years CS history. CS has 84,000 members from 168 countries.

Toshio FUKUDA
 The University Professor Waseda, Waseda Alumnus, Prof. Emeritus Nagoya Univ., Prof. Meijo Univ. IEEE President 2020. The first from Asia in 135 years history. IEEE has 420,000 members.

Haruki MURAKAMI

Hirokazu KOREEDA

S. ARAKAWA

Yuzuru HANYU

Daiya SETO

Waseda's Priorities to cope with COVID-19

学生・ご父兄・教職員の健康と生命を守る・質の高い教育を提供・研究の継続(2月)

<https://www.waseda.jp/top/news/69265>

- Protect the life and health of students, their family, faculty members, researchers and staff
- Provide high quality online education
- Continue research



Decision to cancel the
March graduation ceremony



Decision to cancel April Entrance
Ceremony and Guidance



Timeline of Online Education Preparation in Waseda against COVID-19

<u>2020.2.5</u>	Started discussion for Online Classes expecting professors would teach from classrooms.
<u>2020.3.11</u>	Announced the delay of start of classes (After 4/20) considering students outside Japan Started " <u>Teach Anywhere</u> " development that was formally opened on 4/5
<u>2020.3.24</u>	Announced the further delay of start of classes (<u>5/11</u>)
<u>2020.3.28</u>	Requested faculty to prepare <u>online classes from home</u> with <u>starting technical supports</u>
<u>2020.4.1</u>	<u>Announced to students that Spring 2020 classes will in principle be conducted online</u>
<u>2020.4.3</u>	Japanese 3 Big Smartphone companies announced discounting data communication expenses for students for Spring semester
<u>2020.4.6</u>	Announced campus closure between 4/8~4/21
<u>2020.4.9</u>	Opened " <u>Learn Anywhere</u> " site for students
<u>2020.4.13-</u>	Started <u>online course seminars for faculty and TAs with CTLT</u> (Center for Teaching, Learning and Technology) . 3,400+ profs, staff, etc participated in 15 webinars.
<u>2020.5.3</u>	Started emergency <u>financial supports</u> for students having financial difficulties
<u>2020.5.7</u>	For Faculty: Began supporting recording lectures in classrooms for on-demand classes
<u>2020.5.8</u>	For Students: <u>Began free rental of Wifi router and PCs</u>
<u>2020.5.11</u>	<u>Started Online Education: Online classes with Moodle, Collaborate, Millvi for 50,000 students successfully worked</u> except an <u>on-demand CCS's slow-down for 4 hours</u> .
<u>2020.6.22~</u>	Opened campus, restarted face to face service on appointment basis

3/26 Japanese government established response headquarters

4/7 Japanese government declared state of emergency



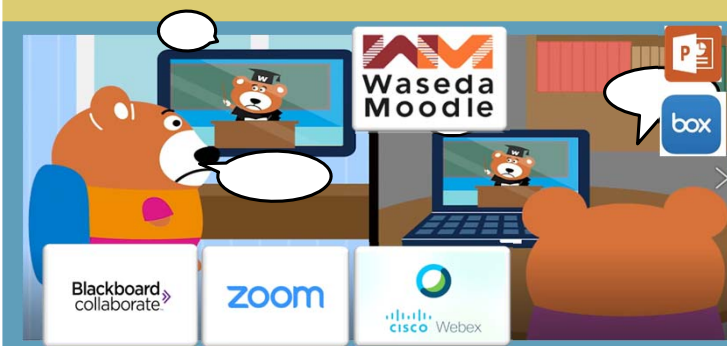
Waseda Online Education started on May 11, 2020 for 50,000 students and 18,000 courses



講義資料・課題提示による授業
Learn through Course Materials / Assignments on Waseda Moodle



収録内容オンデマンド配信による授業
Learn by on-demand lecture video with CCS for self-creation in home and Milvie for in campus via Moodle



リアルタイム配信による授業
Attend online realtime lectures using Collaborate and Zoom via Moodle:
All lectures are recorded

- Professors could choose any of **3 ways for Online Lectures in Spring.** Fall, In-Person + Online will be also available.
- **Students with Financial Difficulties by COVID-19** had **emergency financial supports and WiFi Routers and Note-PCs** were lent for free by **Waseda U.**
- **NTT Docomo, KDDI, SoftBank discounted Student Data Communication fee** for the **Spring Semester**
- **Discounted Smartphones with one year free data communication for students, teachers & staff** for Family WiFi problem.

早稲田大学のNew Open LMS “Waseda Moodle”に2020年4月に移行

Waseda Univ. moved to New Open LMS “Waseda Moodle” from April 2020 from a proprietary LMS , “Waseda-net Course N@vi“ which has been used since 2007.

“Waseda Moodle” has been developed with Blackboard since 2017.

My Waseda
Univ. Portal site

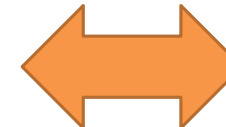


Waseda Moodle
Learning Management System

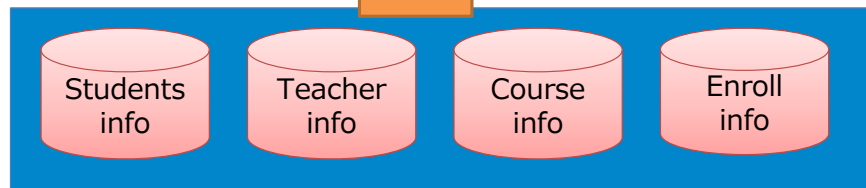


Multiple external services

Blackboard
collaborate



University data coordination



CTLTとポータル・オフィスによる、授業運営相談・支援

Consultations & Supports for Online Classes by CTLT & Portal Office for Profs and students

- With campus closures, **all course supports** have been provided **online**.
- **"Teach Anywhere"** provides **how to prepare and operate Online Lectures with accumulated experience and mutual help among profs., etc.**
- **"Learn Anywhere"** provide **how to prepare and learn Online Lectures. It has multi-device compatibility (browser, ver, etc) and multilanguage user interface.**
- Manuals and Tips also expanded. Implemented a **Chatbot**, opened **helpdesk** to respond to inquiries via **Home-based call center systems** and **emails**.
- Newly appointed faculty also helped to provide detailed and timely support.
- In special cases, in-person supports have been also provided.

Date	Inquiries
2019.04	1,800
2020.04	6,300

"Teach Anywhere"

View Count

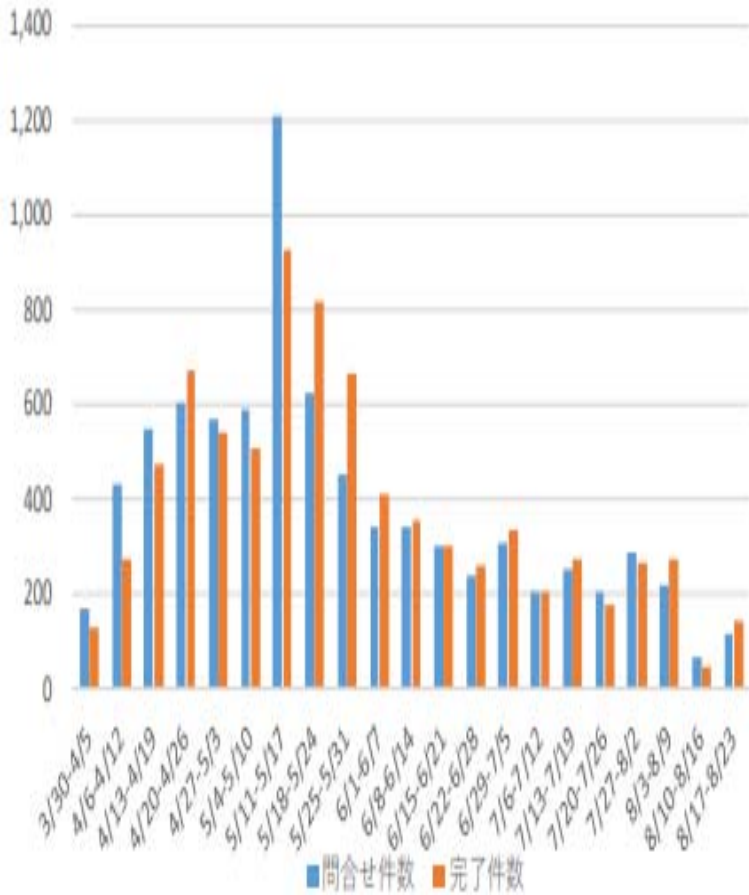
4,311,236

Inquiries Appx.

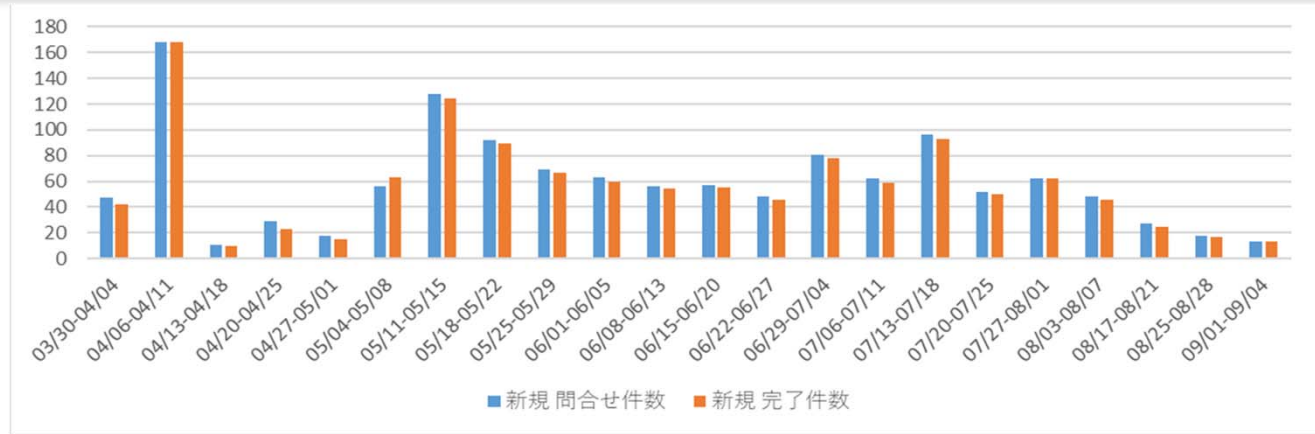
400 per week



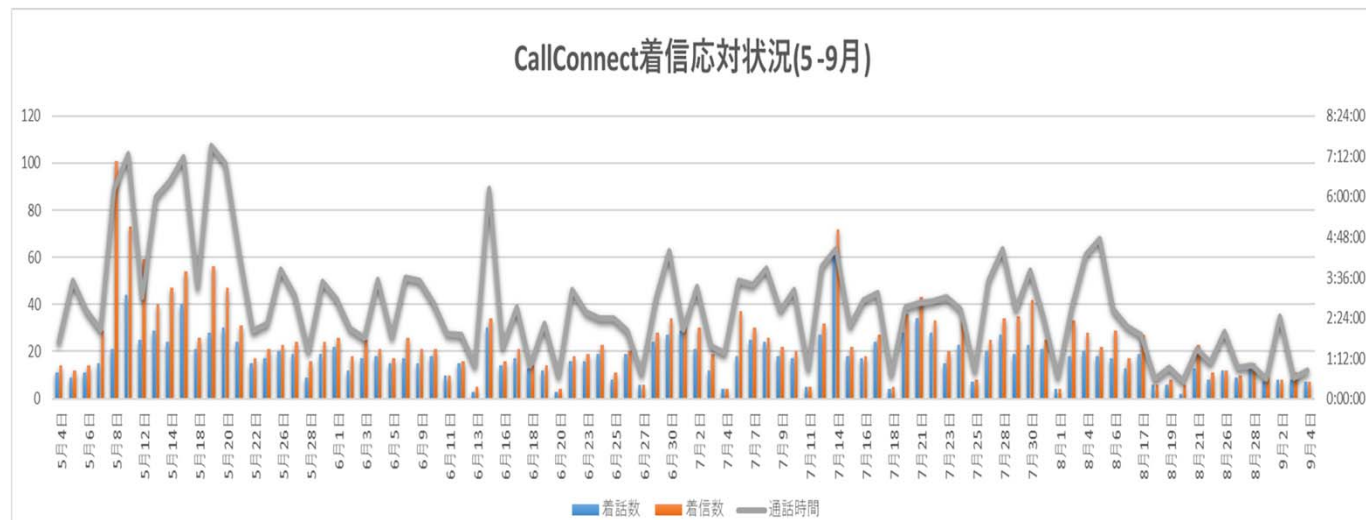
教員・学生からの相談対応：ヘルプデスク（メール），
CTLT techカウンター(対面、オンライン、自宅からのコールセンター方式対応)



ヘルプデスク対応（メールベース）



CTLT techカウンター(対面、電話、Zoom等オンライン相談：
対面は予約性、ソーシャルディスタンス、消毒等感染防止有り)



CTLT techカウンター(職員・TAの自宅からのコールセンター方式対応)

学生からの主なコメント Major Comments from students

- "There are a lot of assignments! Study time per day is 3 hours more than usual"
- "I can learn at my own pace (難しい部分を繰り返し聞いて理解したり、自分の分かり易い速度で聞いたり) , and it feels like I was able to learn deeper."
- "I want to conduct experiments on-campus"
(実験キットの送付、シミュレータ、クラウドツール利用実験は実施)
- 聴覚障害がある人へのテロップの付加は大変良かった
- 集中しすぎてリアルタイム講義が続くと大変つかれる
- 講義中の演習、小テストは効果的であった
- チャット、手を上げるボタンの利用により質疑応答が活発になった
- 黒板を見るよりも、各自のPCを見て理解できるので集中力が高まった
- 教員のオンライン講義習熟度、ネットワーク環境に良く無い場合があった
- ラッシュ時間の通学が避けられたし、通学時間の有効利用が図れた

Waseda U Online Education Coping with COVID-19 Summary

- Started preparation for Online Education in early Feb.
- Online classes from May11 was announced on Mar.24.
- “Teach Anywhere” was formally released on April 5.
- “Learn Anywhere” was released on April 9.
- WiFi routers and PCs were lent for free to students having financial difficulties with Emergency Financial Supports.
- Online classes have been smoothly proceeded with collaboration of teachers, students, and staff resolving a lot of small problems everyday.
- Online Examinations with hand-written Zoom real-time watching, open-text, and take-home methods were used in Spring. For Fall Semester, AI proctors have been evaluated.
- 実験・実習を中心とした対面講義でも他県・他国からの履修に配慮しオンライン配信併用予定
- 新入生を中心に同級生と会う・親しくなれるチャンスを、大学院・学部・学科レベルだけでなく学生部、キャリアセンター、校友課等職員部課も各種オンラインイベントを通して用意
- 学生・卒業生・商店街が学生応援歌の作成・YouTube合唱ビデオ配信、オンライン早稻田祭
- Waseda Univ. thanks LMS, meeting, contents creation and delivery, various scientific tools including MATLAB, STATA, Mathematica, smart phones, data communication devices, companies supported Waseda University Online Education.